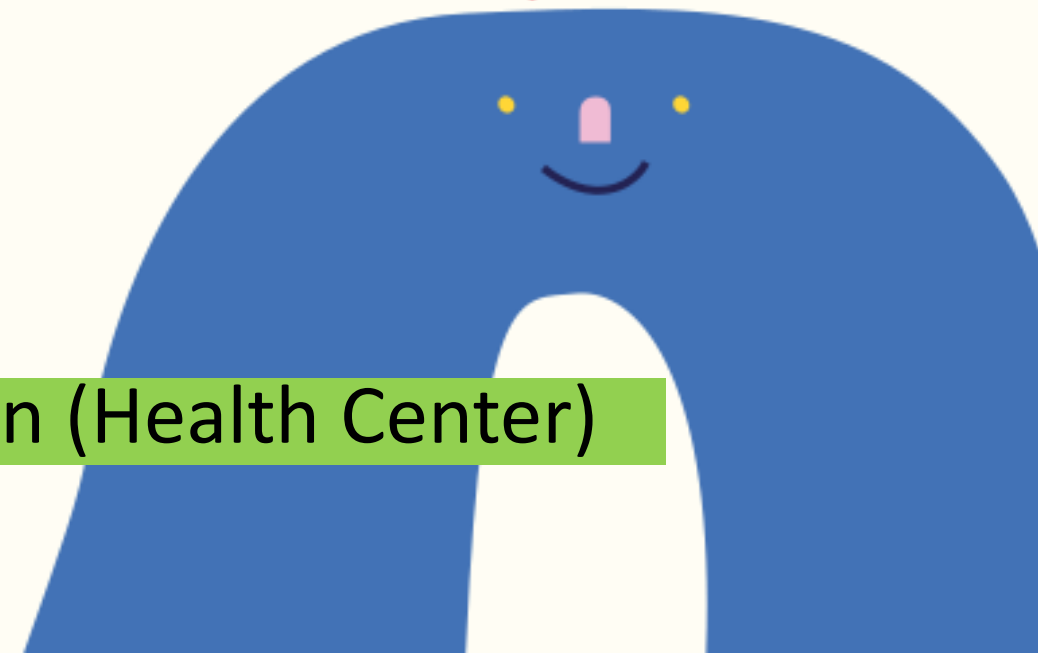
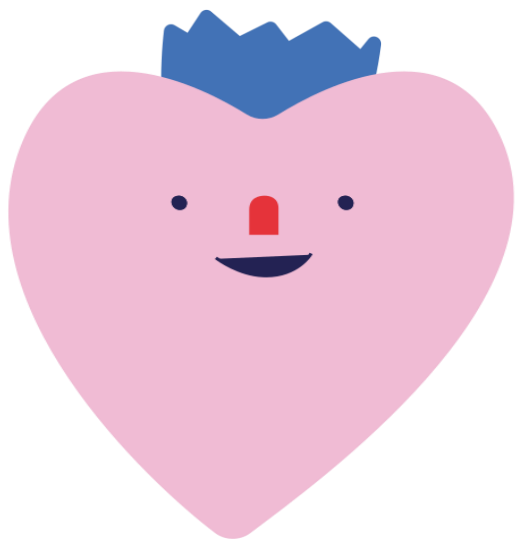




Health Information Card (Health Questionnaire) Troubleshooting Guide

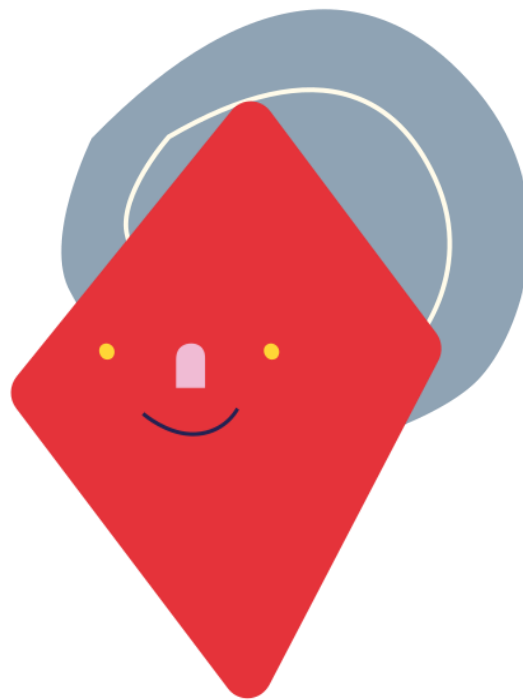


Office of Student Affairs - Counseling and Health Service Division (Health Center)



Fill in after 2025/8/11~

Attention! 【 Health Information Card (Health Questionnaire) 】 is limited to new students of the current academic year. , EX:114 Academic Year. “ , Student ID with *14***** ; If you are a student who withdrew from school and return back , OR you have already tried to resolve issues but still cannot fill out the form, Please come to the Health Center for assistance!

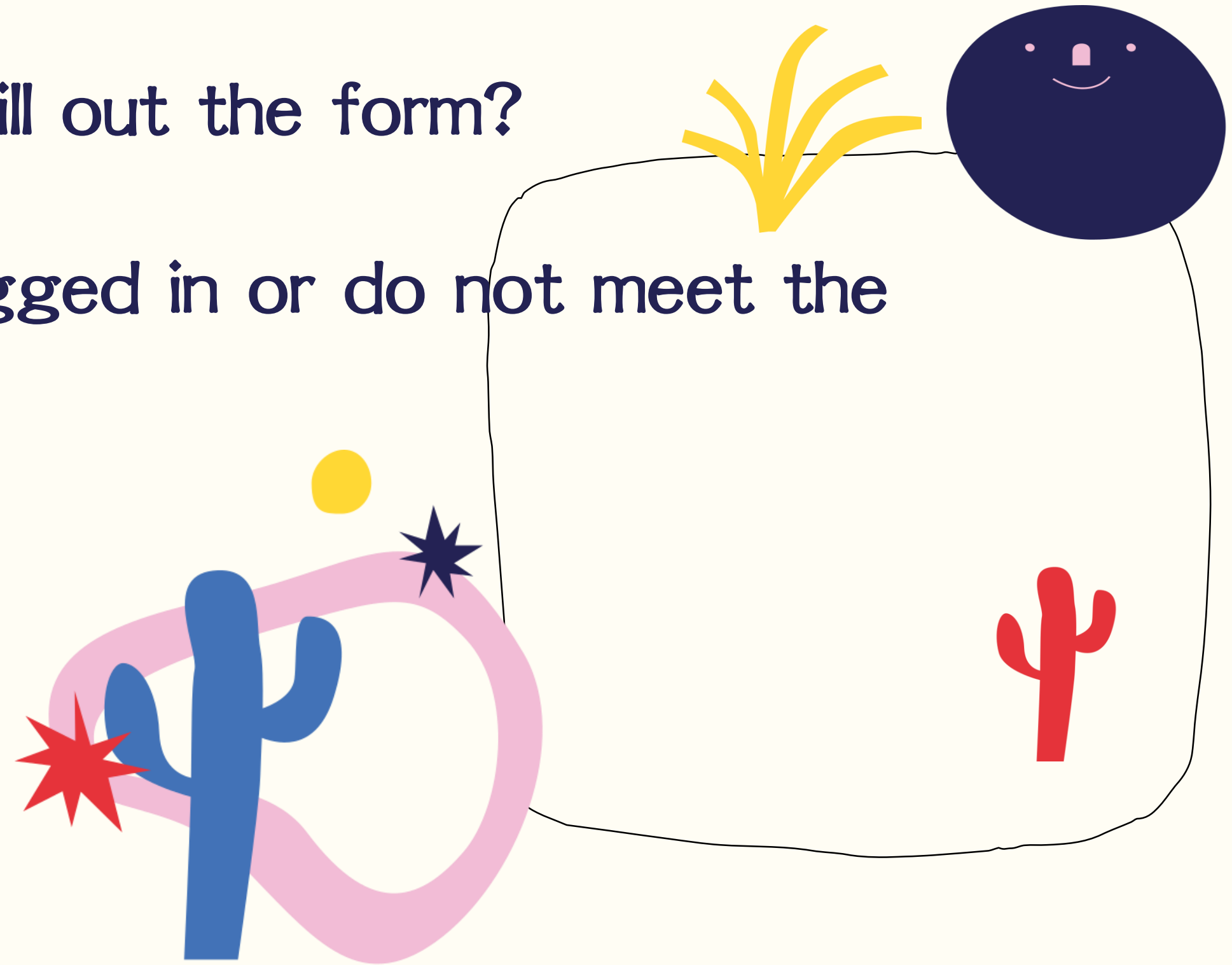


The Health Center is located in the Activity Center (the building with the Family Mart), next to the post office and the family medicine clinic.



Do you have any of the following issues?

- ◆ Unable to open the page and fill out the form?
- ◆ Screen shows "You are not logged in or do not meet the identity eligibility"?!?
- ◆ 404?
- ◆ Unable to save or confirm?



Don't worry! Step-by-step guide from 1 to 6, go~ ~"



The image shows a web browser window displaying the Nsysu Office of Student Affairs website. The browser's address bar shows the URL `sis.nsysu.edu.tw/ONAMS/`. The website has a blue header with the text "國立中山大學學生事務處 網路申辦系統" and a logo. A large central graphic features a notepad with the text "Nsysu Office of Student Affairs" and "歡迎您使用通辦網 - 學生事務處網路申辦系統!". On the left, there is a sidebar with various service links. The Chrome menu is open on the right, with a red arrow labeled "1" pointing to the menu icon and another red arrow labeled "2" pointing to the "Settings" option.

國立中山大學學生事務處
網路申辦系統

通辦網
登入(Login)

- 緩徵與儘後召集
The military service postpones levying
- 弱勢學生助學申請
Financial for underprivileged students
- 就學貸款申請
Student Loan
- 團體保險申請
student group insurance
- 學雜費減免
Tuition waiver
- 學生會費
Student Association fee
- 學生宿舍申請
Dormitory application
- 新生健康檢查記錄表
Health Examination Record
- 職業興趣量表
Career Interest Inventory
- 自傳填寫

Nsysu Office of Student Affairs

Hello

歡迎您使用通辦網 - 學生事務處網路申辦系統!
請選擇您要使用的功能!

版權所有©2011 國立中山大學 學生事務處
(建議使用瀏覽器IE9以下版本,並請關閉彈跳視窗封鎖功能)

1

2

Settings

國立中山大學學生事務處 網路中心 步驟教學: 別擔心

Settings - Privacy and security

chrome://settings/privacy

Settings

- You and Google
- Autofill and passwords
- Privacy and security**
- Performance
- Appearance
- Search engine
- Default browser
- On startup

- Languages
- Downloads
- Accessibility
- System
- Reset settings

- Extensions
- About Chrome

Safety Check

Chrome found some safety recommendations for your review

Go to Safety Check

Privacy and security

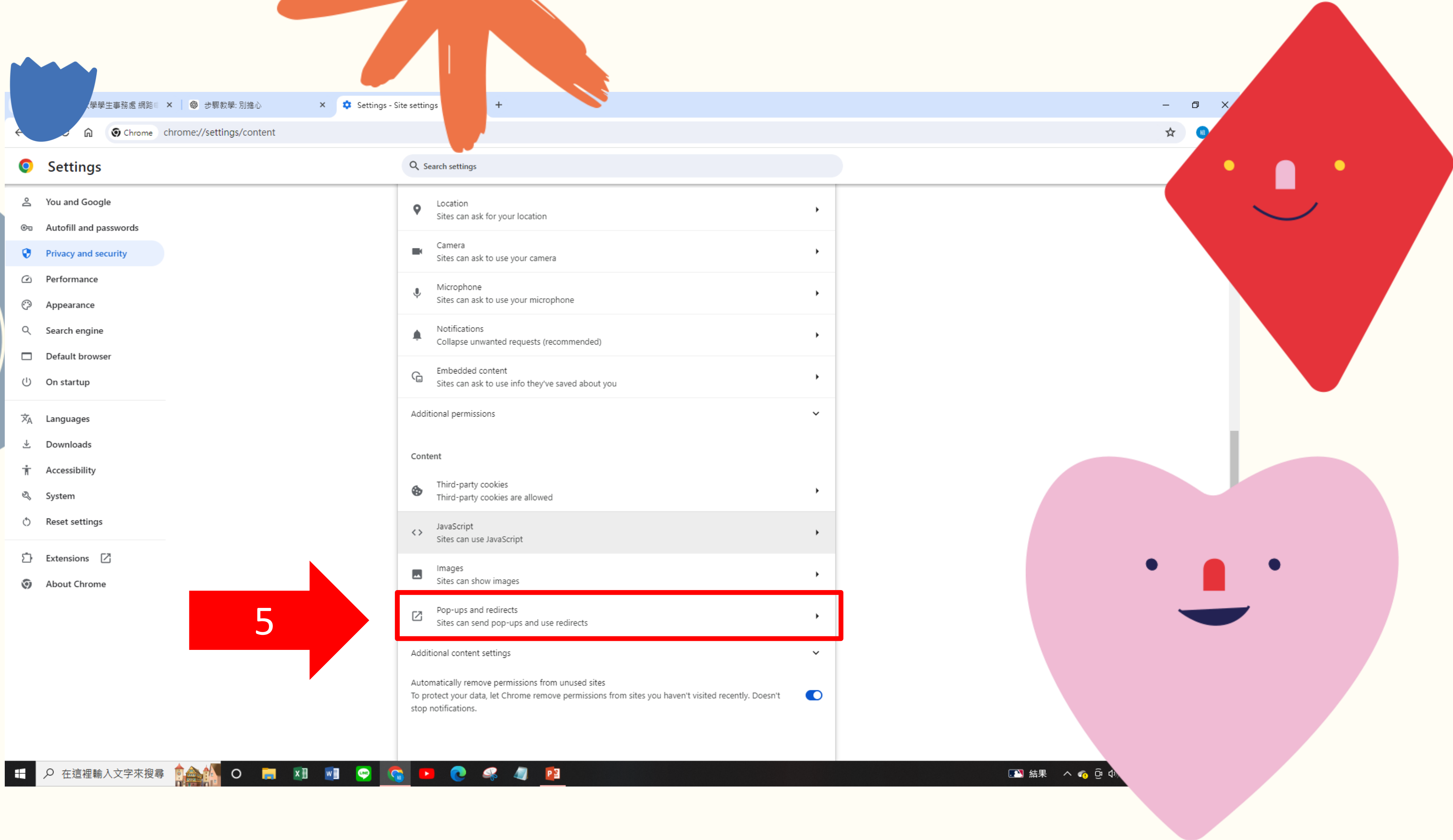
- Delete browsing data
Delete history, cookies, cache, and more
- Privacy Guide
Review key privacy and security controls
- Third-party cookies
Third-party cookies are allowed
- Ad privacy
Customize the info used by sites to show you ads
- Security
Safe Browsing (protection from dangerous sites) and other security settings
- Site settings**
Controls what information sites can use and show (location, camera, pop-ups, and more)

3

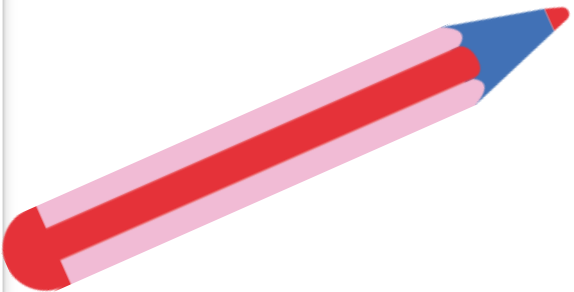
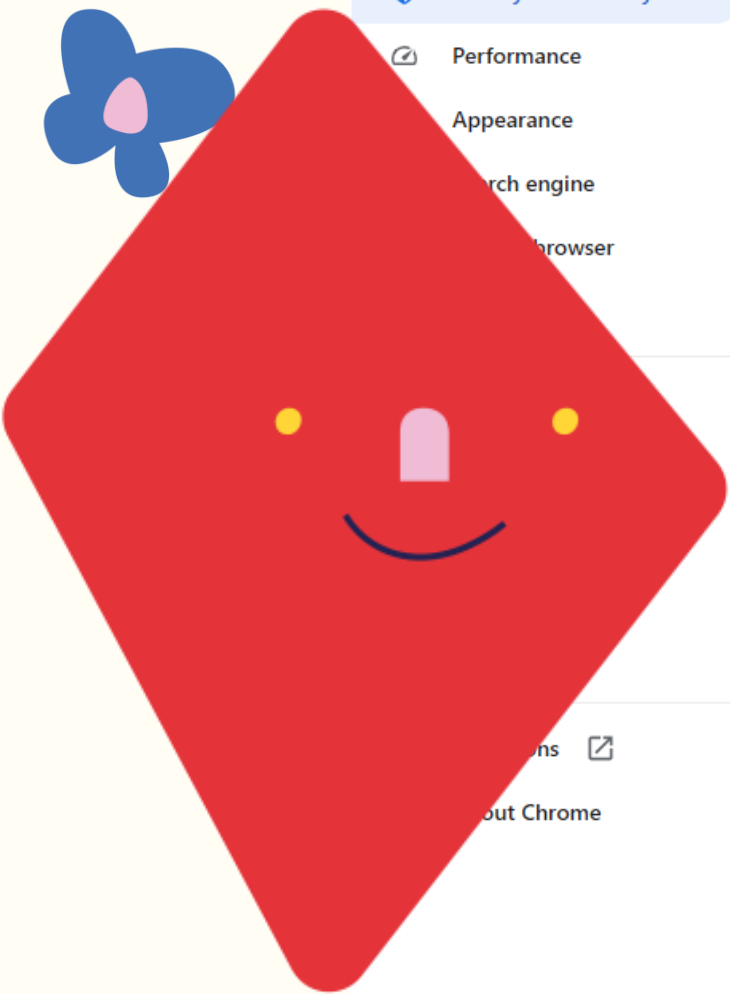
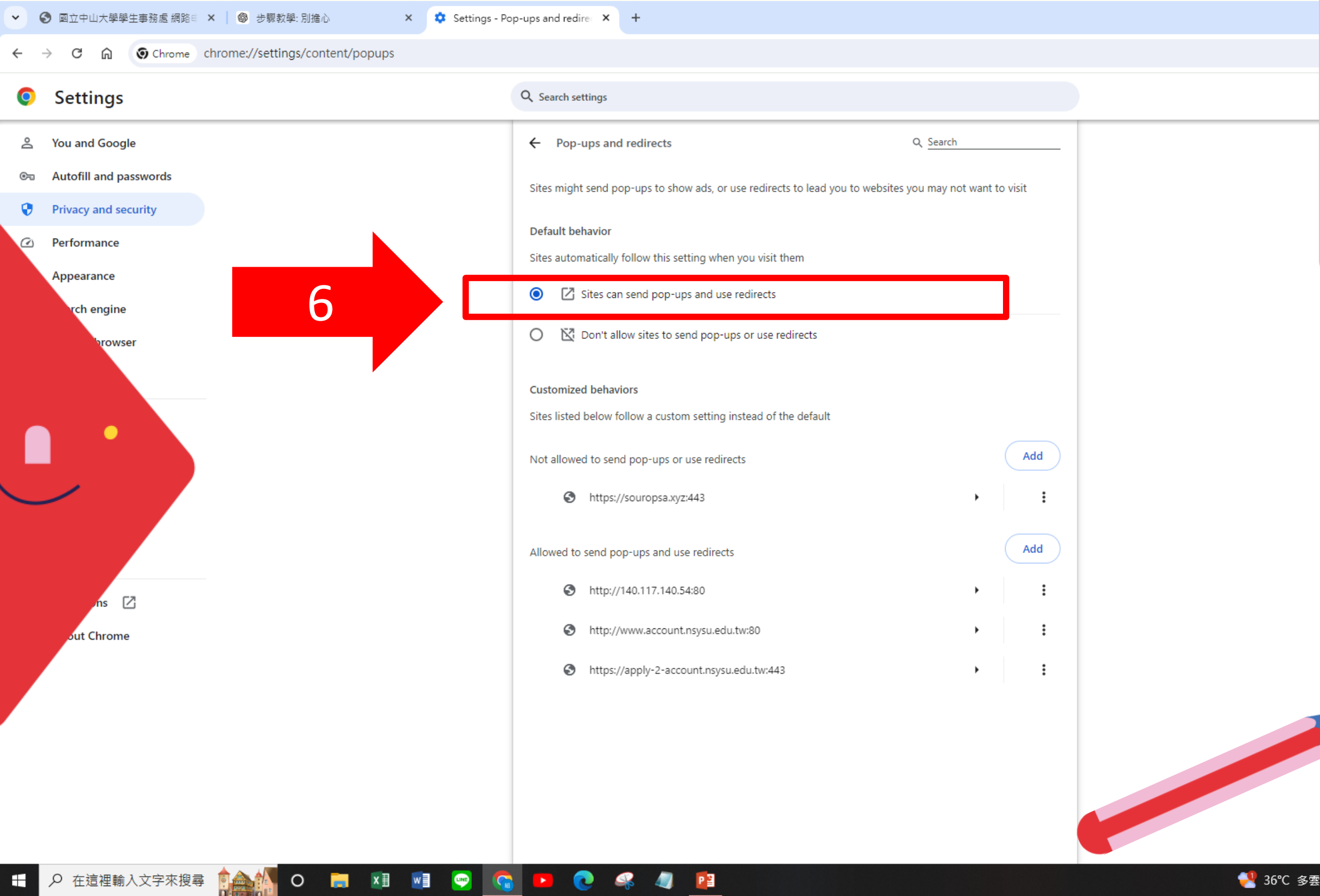
4

在 這裡輸入文字來搜尋

36°C 多雲時晴 下午 01:37 2024/7/17



Finish!





★ After completing the guide, close it and log in again.

★ If it still doesn't work, please restart your device. Thank you!

★ If it still doesn't work.
Please come to the health center for assistance!



Where can I find the Health Information Card (questionnaire)?

國立中山大學學生事務處
網路申辦系統

通辦網

登入(Login)

學雜費減免
Tuition waiver

學生會費
Student Association fee

學生宿舍申請
Dormitory application

新生健康檢查記錄表
Health Examination Record

職業興趣量表
Interest Inventory

自傳填寫
Biography

職能量表
Common Competency Inventory

勞工就業服務調查
Employment Service Survey of the Ministry of Labor

新生心理量表
Inventory of Mental Health

健康資料卡(問卷填寫)
Student Health Examination Form

在這裡

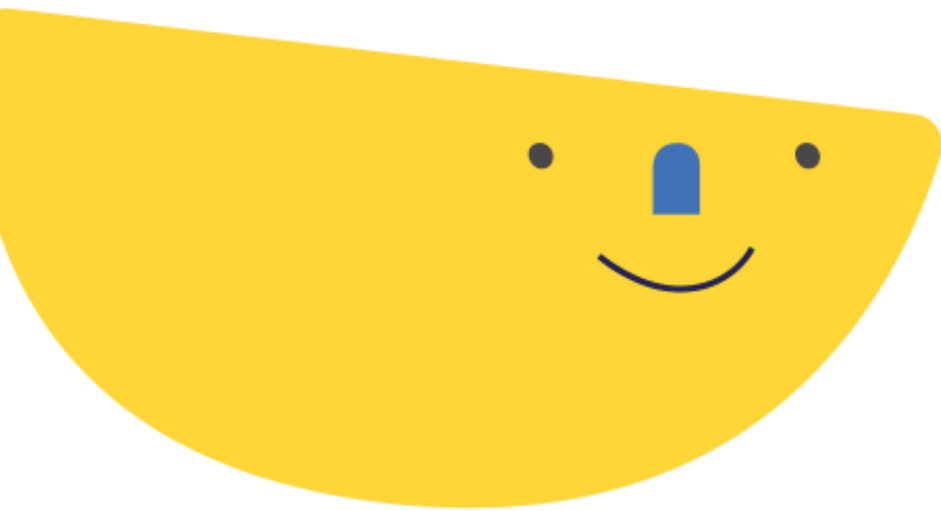
Nsysu Office of Student Affairs

Hello

歡迎您使用通辦網 - 學生事務處網路申辦系統！
請選擇您要使用的功能！

版權所有©2011 國立中山大學 學生事務處
(建議使用瀏覽器IE9以下版本 並請關閉彈跳視窗封鎖功能)

Thank you for
watching!



Office of Student Affairs – Counseling and Health Service Division (Health Center)